



THREE INTERSTATE PAD SITES AVAILABLE

I-35 & Poplar Street (NEC), Wellsville, Kansas



SALE PRICE: \$4.60-\$5.50/SF | 1.75 TO 9.27 ACRES

DEMOGRAPHICS

	1 mile	3 miles	5 miles
Estimated Population	7,867	99,898	240,730
Avg. Household Income	\$8,194	\$83,599	\$248,674

- Pad sites available
- High visibility to Interstate 35
- Join Wellsville development growth
- Average household income over \$100,000
- Join TravelAmerica and A & W Restaurant



CLICK HERE TO VIEW MORE
LISTING INFORMATION

For More Information Contact:

CAMREN SINCLAIR | 816.412.7352 | csinclair@blockandco.com

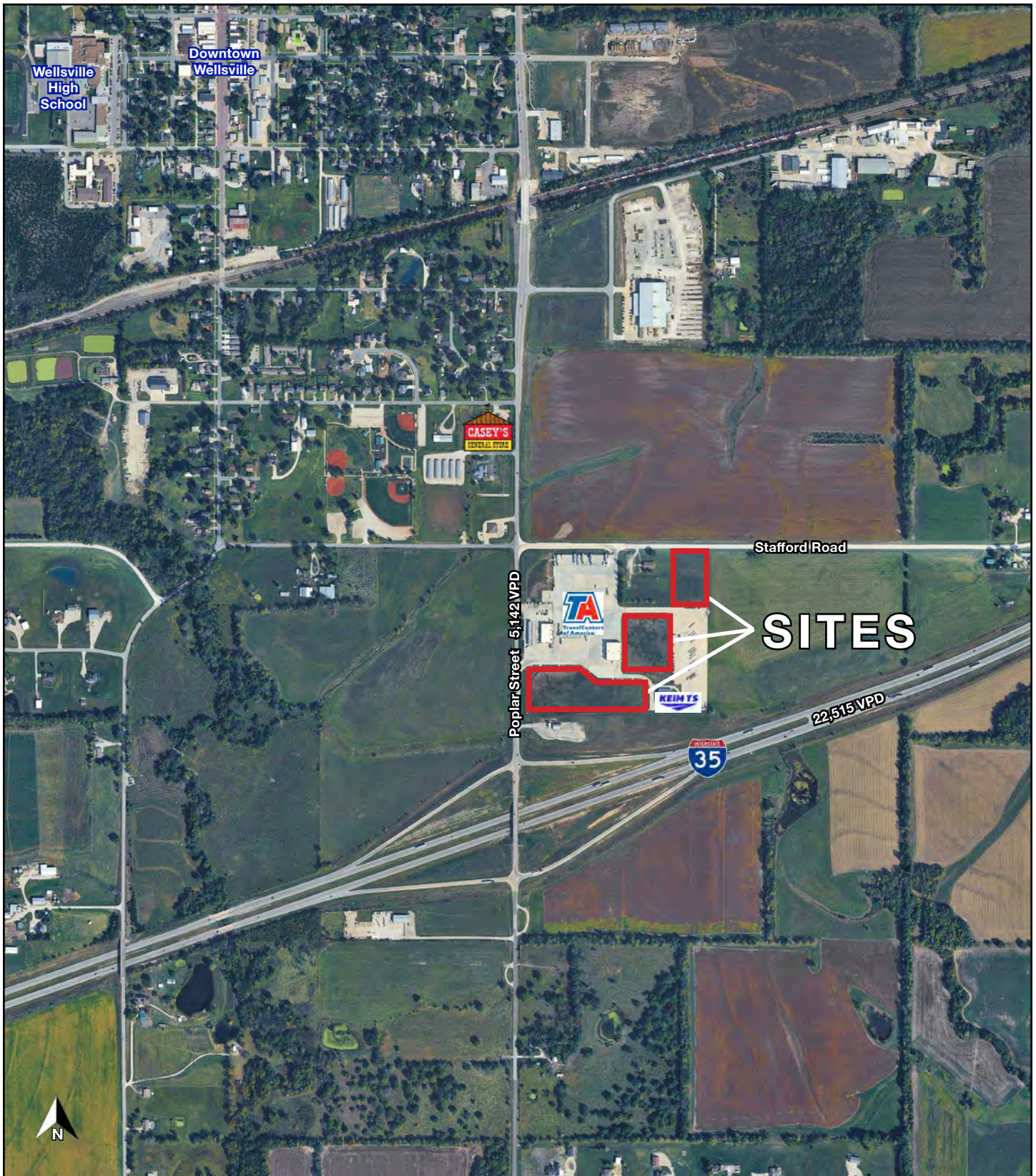
GREG ROBERTS | 816.412.7384 | groberts@blockandco.com

Exclusive Agents

DRONE PHOTOS

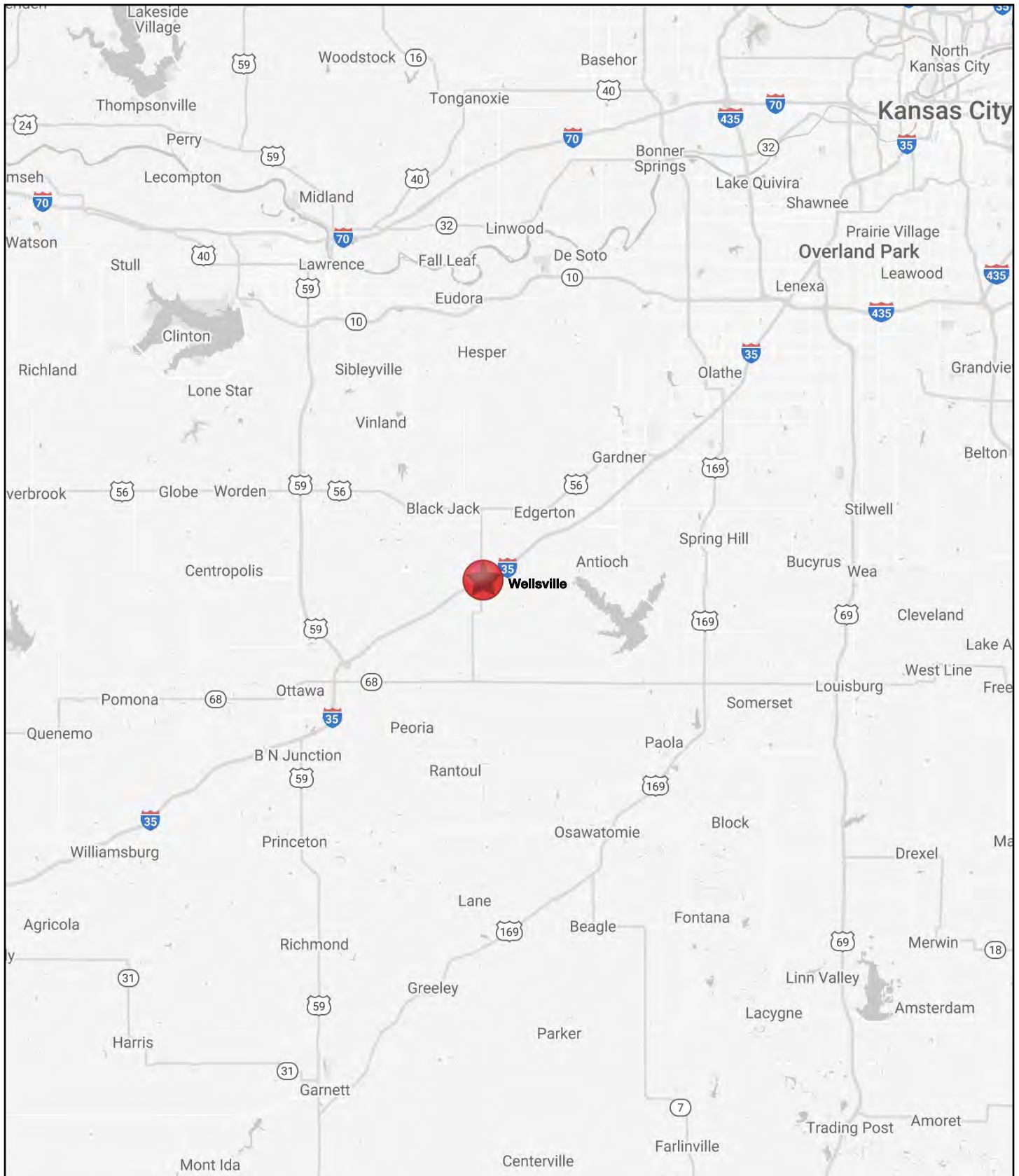


DRONE PHOTOS



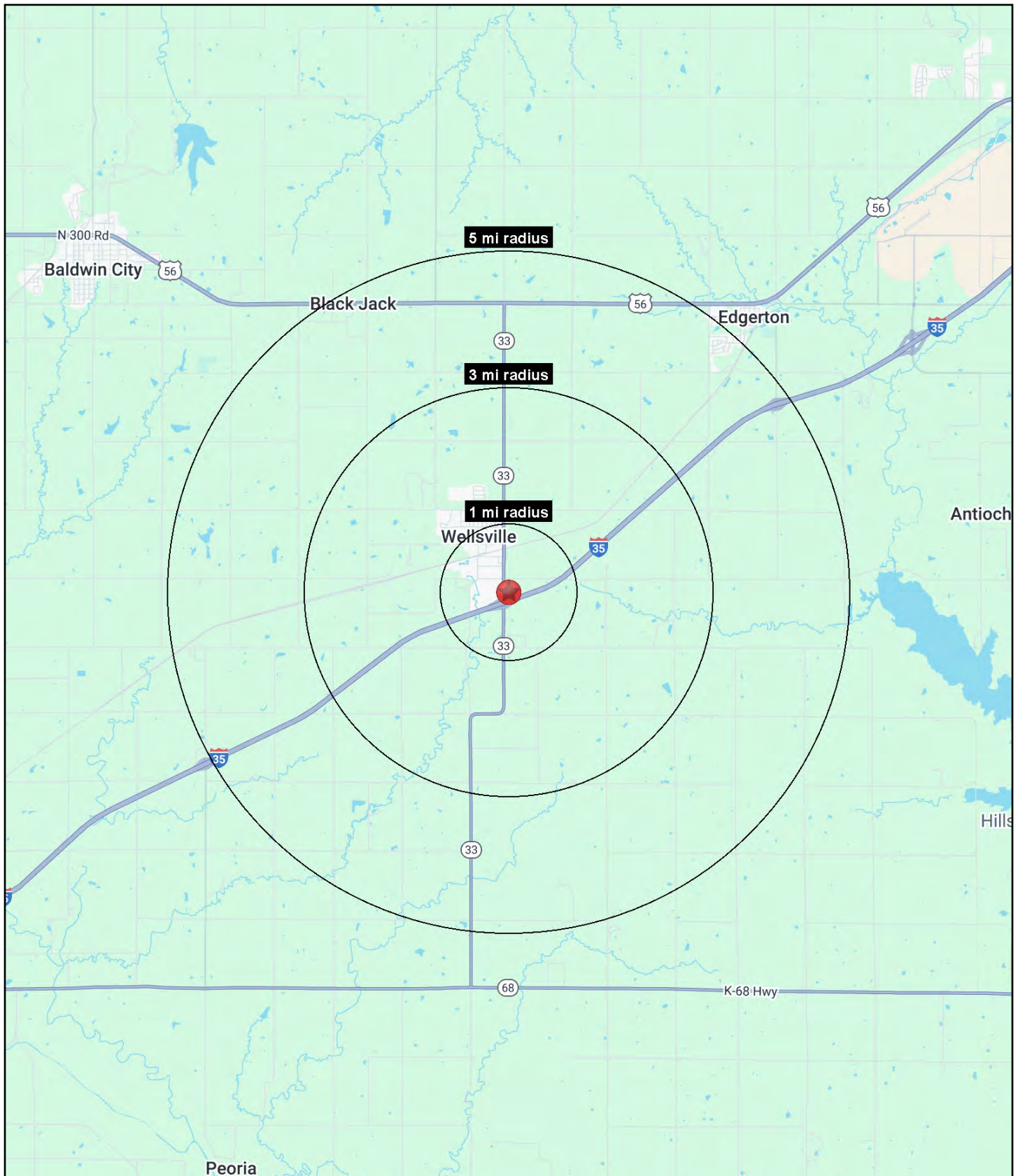
INTERSTATE PAD SITES AVAILABLE

I-35 & Poplar Street (NEC), Wellsville, Kansas



INTERSTATE PAD SITES AVAILABLE

I-35 & Poplar Street (NEC), Wellsville, Kansas





INTERSTATE PAD SITES AVAILABLE

I-35 & Poplar Street (NEC), Wellsville, Kansas

I-35 & Poplar Street (NEC) Wellsville, KS 66092	1 mi radius	3 mi radius	5 mi radius
Population			
2025 Estimated Population	668	2,859	4,987
2030 Projected Population	655	2,824	4,940
2020 Census Population	740	2,988	5,102
2010 Census Population	713	2,878	4,927
Projected Annual Growth 2025 to 2030	-0.4%	-0.2%	-0.2%
Historical Annual Growth 2010 to 2025	-0.4%	-	-
2025 Median Age	41.5	39.6	39.9
Households			
2025 Estimated Households	255	1,116	1,912
2030 Projected Households	253	1,115	1,923
2020 Census Households	267	1,123	1,897
2010 Census Households	260	1,076	1,826
Projected Annual Growth 2025 to 2030	-0.1%	-	0.1%
Historical Annual Growth 2010 to 2025	-0.1%	0.2%	0.3%
Race and Ethnicity			
2025 Estimated White	93.0%	92.6%	91.8%
2025 Estimated Black or African American	0.3%	0.7%	0.9%
2025 Estimated Asian or Pacific Islander	0.3%	0.6%	0.8%
2025 Estimated American Indian or Native Alaskan	0.5%	0.6%	0.6%
2025 Estimated Other Races	5.8%	5.5%	5.9%
2025 Estimated Hispanic	4.5%	4.7%	5.0%
Income			
2025 Estimated Average Household Income	\$110,736	\$101,235	\$108,089
2025 Estimated Median Household Income	\$80,915	\$79,591	\$85,963
2025 Estimated Per Capita Income	\$43,014	\$39,821	\$41,605
Education (Age 25+)			
2025 Estimated Elementary (Grade Level 0 to 8)	0.9%	1.1%	1.4%
2025 Estimated Some High School (Grade Level 9 to 11)	4.1%	4.6%	4.6%
2025 Estimated High School Graduate	33.6%	33.1%	32.1%
2025 Estimated Some College	25.3%	26.5%	25.5%
2025 Estimated Associates Degree Only	13.0%	12.2%	11.5%
2025 Estimated Bachelors Degree Only	14.1%	15.4%	17.2%
2025 Estimated Graduate Degree	8.9%	7.1%	7.7%
Business			
2025 Estimated Total Businesses	39	63	72
2025 Estimated Total Employees	404	689	741
2025 Estimated Employee Population per Business	10.4	10.9	10.4
2025 Estimated Residential Population per Business	17.3	45.1	69.6

©2026, Sites USA, Chandler, Arizona, 480-491-1112 Demographic Source: Applied Geographic Solutions 11/2025, TIGER Geography - RS1